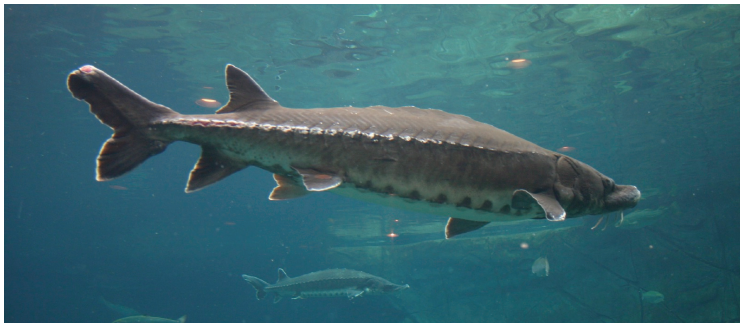


Great Ambassador

Meeting The Ambassador



FOR THE TEACHER



Introduce your students to Sally Sturgeon by reading the story: **Meeting The Ambassador** or presenting the **Intermediate Meet the Ambassador** PowerPoint presentation. Sally is a real Lake Sturgeon who has survived in the Great Lakes for over 100 years. Her ancestors have lived in the Lakes for thousands of years. There have been many changes to the Lake Sturgeon's environment, which makes their survival today all that more amazing. But their survival into the future is not guaranteed. After students have read the story they should see the **Intermediate Great Ambassador** PowerPoint presentation.

Have the class read the **Environmental Pressures on Lake Sturgeon** reading card. Lead the class in a discussion about some of the environmental pressures facing the Great Lakes and their inhabitants. Follow this with the activities described below. At the end of this section students can go to the online game, **Sally vs Sharky** quiz.

Great Ambassador Activity

FOR THE TEACHER

Part 1

Have a large piece of paper taped to the wall which will form the background of a collage depicting the sturgeon's Great Lakes home. At the top have the title: A Home Fit for a Lake Sturgeon.

Brainstorm with the students a list of specific aspects of the Great Lakes environment that make it a great home for sturgeon. With the list completed, assign each student an image to create and add to the collage—a drawing, painting, symbol or magazine photo. Begin by having students add normal, healthy aspects of the original environment—the water, native plants—both aquatic and land, native animals—invertebrates and vertebrates, a clear sky, trees and so forth. Be sure to have a large image of the sturgeon as the central image and use bright vibrant colours.

Using a digital camera take a picture of the collage depicting the Great Lakes in their healthy state.

Part 2

Divide the class into 5 small groups.

Assign each group the task of researching one of the processes that add to the degradation of the Great Lakes—acid rain, urban development, non-native invasive species, contaminated runoff and heavy metals wastewater.

Students will research these processes and make lists of the images, words, symbols and chemicals that are introduced into the Lakes by these means. They will also list the effects they have on the quality of the water and the life in and around the Lakes.

Using small pieces of paper, have students draw images or write words to represent the things on their lists that are harmful to the environment. Find creative ways to represent, increased algae, more garbage, lower water

levels and so forth. Be sure to use darker more somber colours. They will also create a title to represent the process they researched.

When the images are completed, have the first group attach their title to a part of the collage and then attach all of the pieces of paper representing the damage to the environment.

Using a digital camera again, take another picture of the collage.

Continue having each group of students add their titles and research to the collage. As each group finishes take a picture. Through this process the normal healthy image of the environment is gradually obscured by the images of such things as heavy particulate matter, higher acid levels, increased algae, more garbage, lower water levels and so forth.

Take another picture of the collage. By now the sturgeon in your collage will be almost undetectable.

One last picture of the collage should have the title changed. Insert the word “not” in the title as in: A Home Not Fit for a Lake Sturgeon.

Part 3

Now you can play back all of the pictures you have taken as a slide show of how the sturgeon's environment is slowly deteriorating.

Use the [Looking for Solutions Worksheet](#) to have a class discussion about what it would take to bring the environment back to its natural state. If you have time, students could show the effects of the changes they suggest to the Home Fit for a Lake Sturgeon collage, all along taking pictures of each stage so they can be added to the slide show.

Consider showing your slide show to other classes or even send a copy to your local MP.